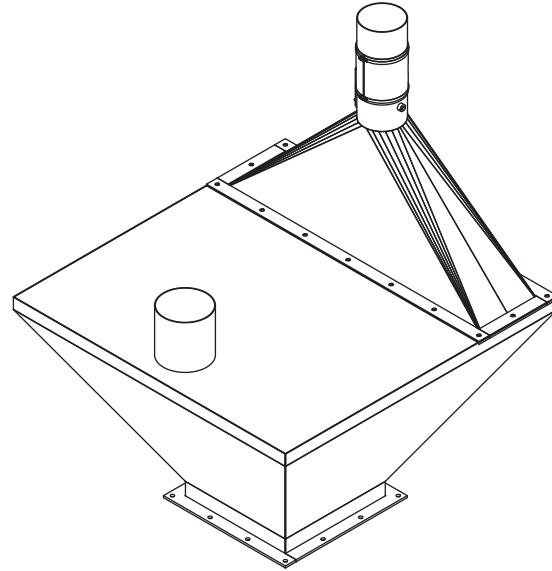
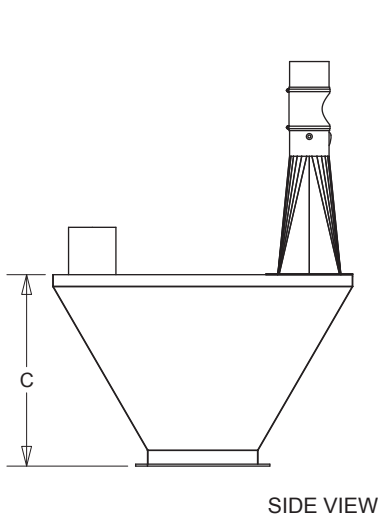


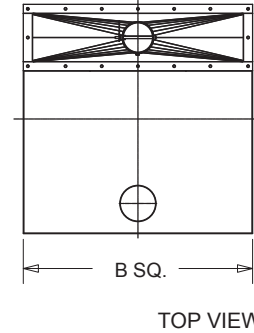


SURGE HOPPER TYPE II (SQUARE)

KICE INDUSTRIES, INC. / 5500 Mill Heights Drive / Park City, KS 67219 www.kice.com / sales@kice.com



MODEL	A	B	C	EST. WEIGHT
24" TO 6"	36	24	19	65
24" TO 8"	34 1/2	24	17 1/2	65
31" TO 10"	43 1/2	31	21 1/2	80
31" TO 12"	42	31	20	80
38" TO 14"	51 1/4	38	24 1/4	101
38" TO 15"	50 1/4	38	23 1/4	101
45" TO 24"	48 1/4	45	20 1/4	134



NOTES:

DIMENSIONS SHOWN MAY VARY DEPENDING ON JOB REQUIREMENTS

MATERIALS OF CONSTRUCTION PER SPECIFIC JOB

SQUARE OR ROUND FLANGES DEPENDING ON JOB

SIGHT GLASS STANDARD

INLET DIMENSION PER SPECIFIC JOB

